

Socio-Technical Work-Rate Increase Associates With Changes in Work Patterns in Online Projects



Farhana Sarker

Bogdan Vasilescu
[@b_vasilescu](#)

Kelly Blincoe
[@KellyBlincoe](#)

Vladimir Filkov
[@vlfilkov](#)



UC DAVIS
UNIVERSITY OF CALIFORNIA

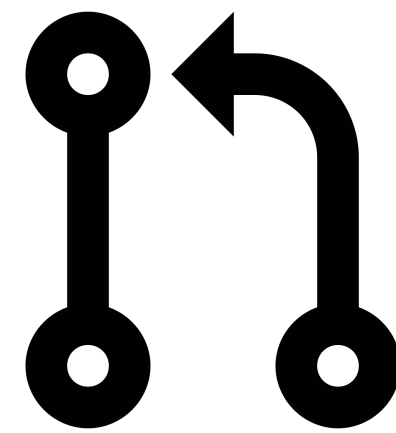
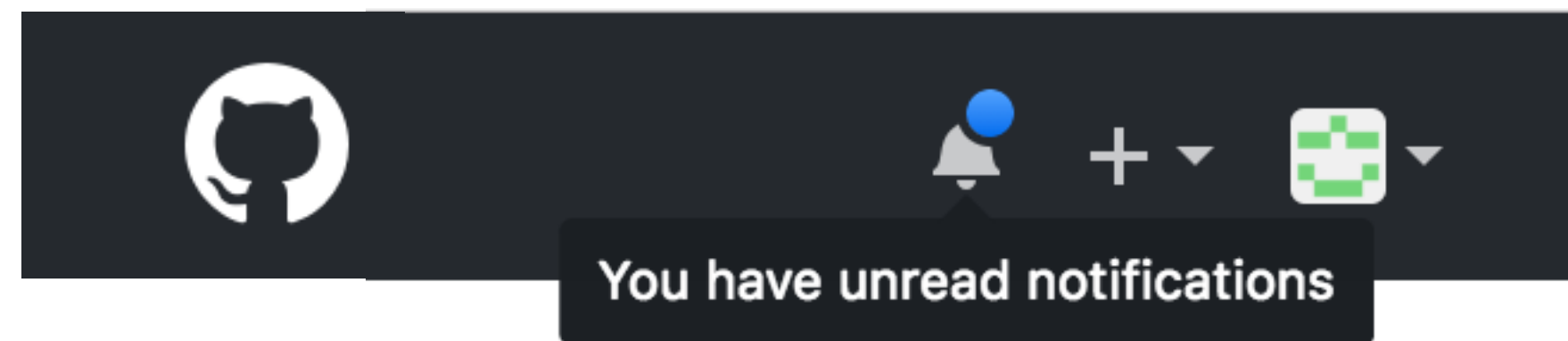
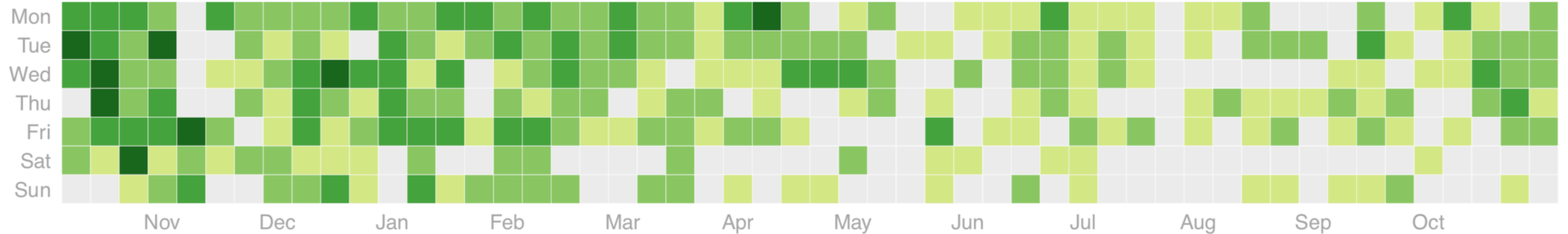
**Carnegie
Mellon
University**



High workload

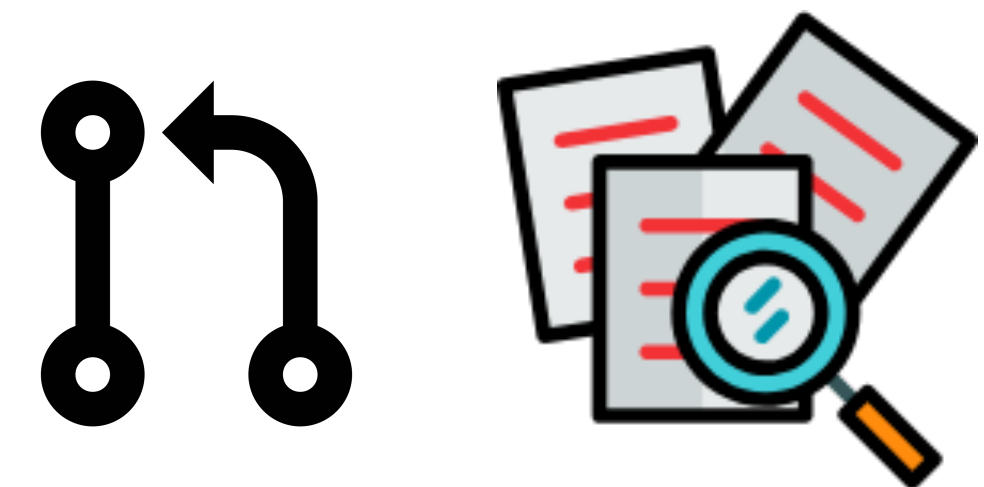
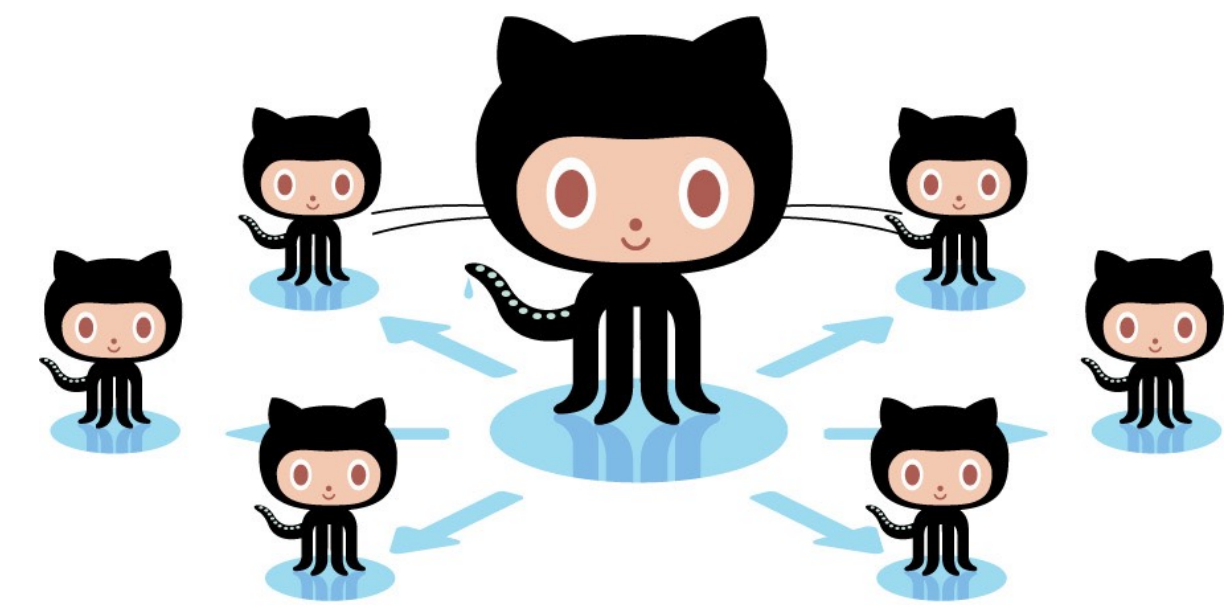
ONE GITHUB DEVELOPER:

Number of repos (2013-11-25 : 2014-11-23) 0 1 3 5 8



High work-rate, high stress

- ❖ GitHub is like being onstage
(Dabbish et al. 2012), (Marlow et al. 2013)
- ❖ Communication overload causes stress and reduces productivity
(Reinke and Chamorro-Premuzic 2014), (Kalman and Rafaeli 2011), (Reinecke et al. 2017)
- ❖ Social pressure to respond quickly is associated with burnout and anxiety
(Reinecke et al. 2017)
- ❖ Multi-tasking common, causes stress
(Vasilescu et al., 2016), (Mark et al., 2008)



Social workload



Prevalence of
high work-rates



Perceived Causes and
Impacts of Stress



Effects of increased workload
on developers' work patterns



Data mining

+



Developer Survey

Sample:

- 57K+ developers
- 10+ years of activity
- 150K+ repositories

Developer survey

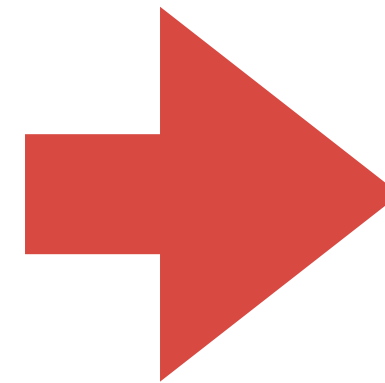
Pilot Survey

45 Responses (13%)

Open-ended Questions

What causes you work-related stress?

deadlines



Survey

465 Responses (23%)

Likert-scale questions

My work-related stress is caused by deadlines.

- ☐ Strongly disagree
- ☐ Somewhat disagree
- ☐ Neither agree nor disagree
- ☐ Somewhat agree
- ☐ Strongly agree

Findings

Socio-Technical Work-Rate Increase Associates With Changes in Work Patterns in Online Projects

Farhana Sarker Bogdan Vasilescu Kelly Blincoe Vladimir Filkov
University of California, Davis Carnegie Mellon University University of Auckland University of California, Davis
fasarker@ucdavis.edu vasilescu@cmu.edu k.blincoe@auckland.ac.nz vfilkov@ucdavis.edu

Abstract—Software developers work on a variety of tasks ranging from the technical, e.g., writing code, to the social, e.g., participating in issue resolution discussions. The amount of work developers perform per week (their work-rate) also varies and depends on project needs and developer schedules. Prior work has shown that while moderate levels of increased technical work and multitasking lead to higher productivity, beyond a certain threshold, they can lead to lowered performance.

Here, we study how increases in the short-term work-rate along both the technical and social dimensions are associated with changes in developers' work patterns, in particular communication sentiment, technical productivity, and social productivity. We surveyed active and prolific developers on GitHub to understand the causes and impacts of increased work-rates. Guided by the responses, we developed regression models to study how communication and committing patterns change with increased work-rates and fit those models to large-scale data gathered from traces left by thousands of GitHub developers. From our survey and models, we find that most developers do experience work-rate-increase-related changes in behavior. Most notably

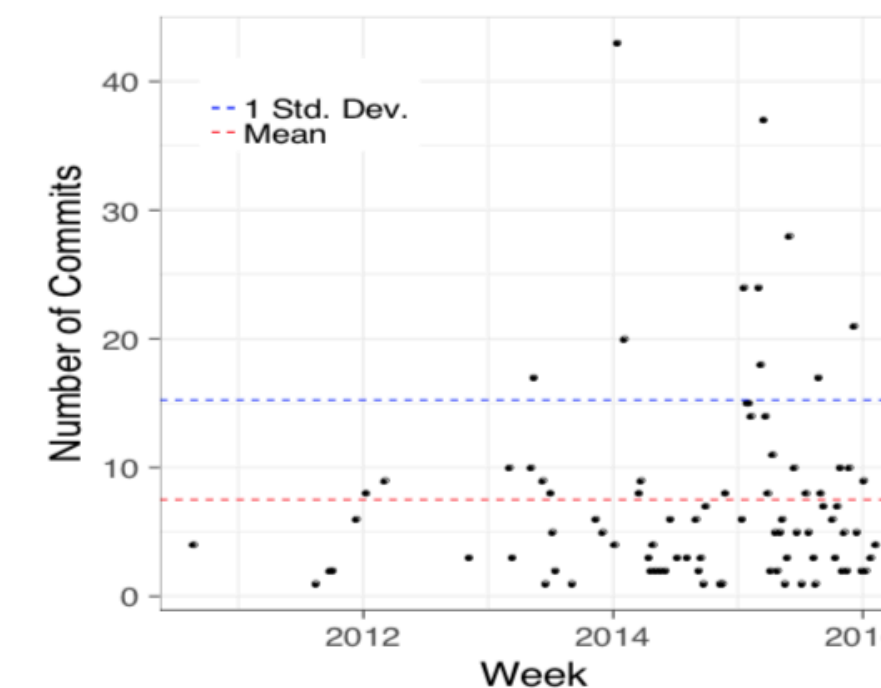
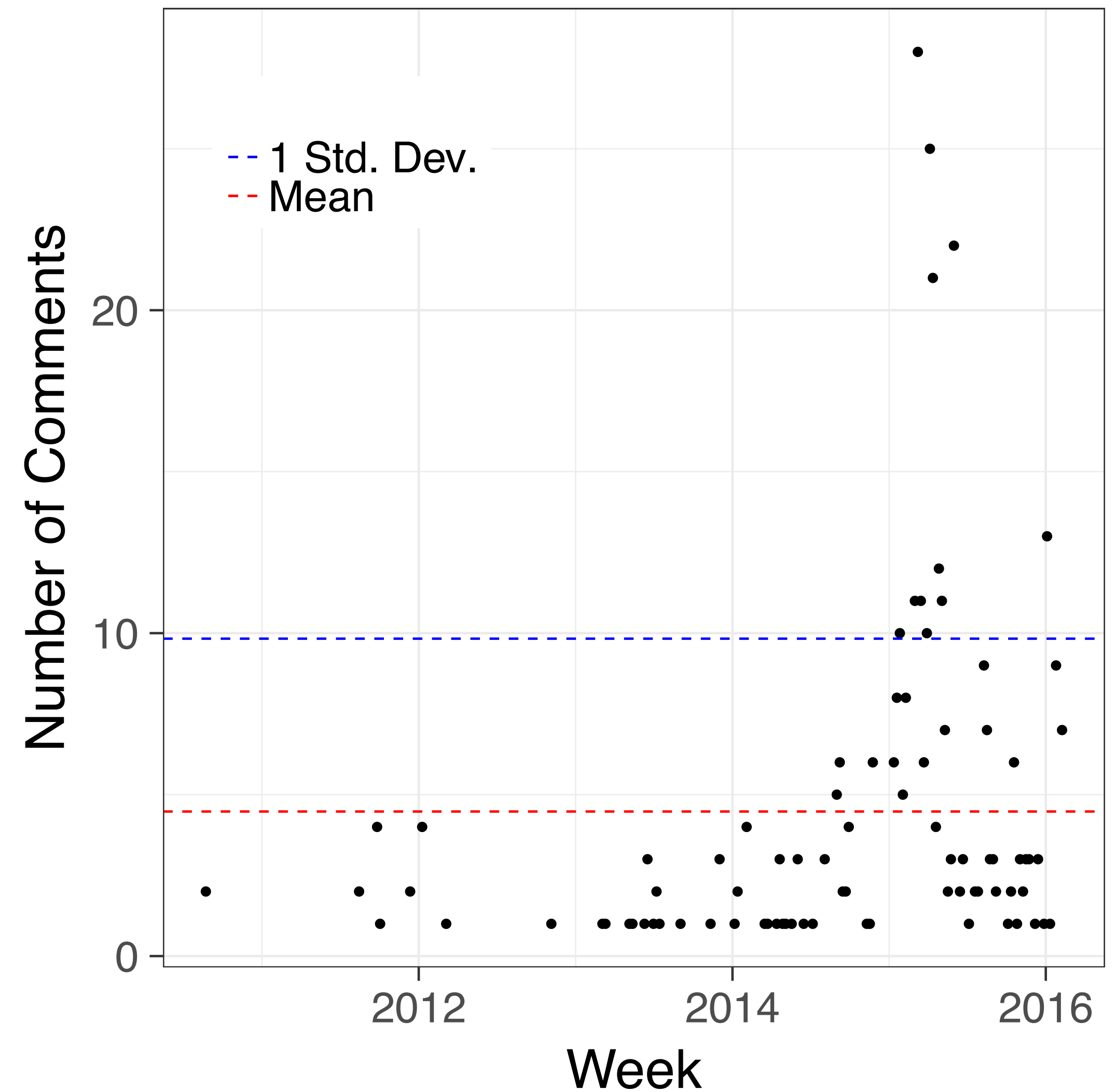
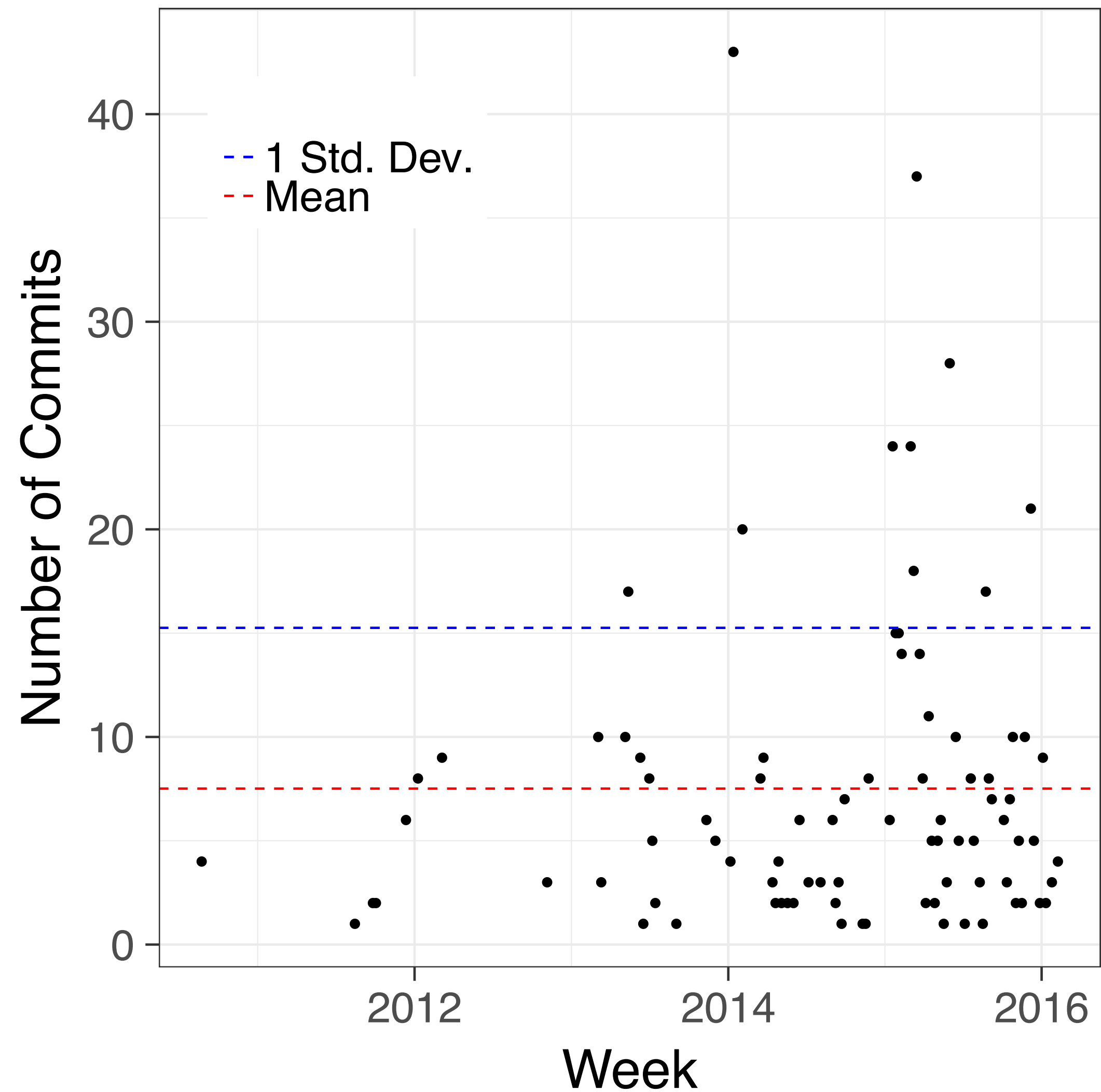


Fig. 1. Example number of commits per week for a prolific developer.

Traditional lines-per-day measures of work aggregate, to an extent, the work-rate of technical tasks. While coordination tasks figure in there too by association, it is not simple to

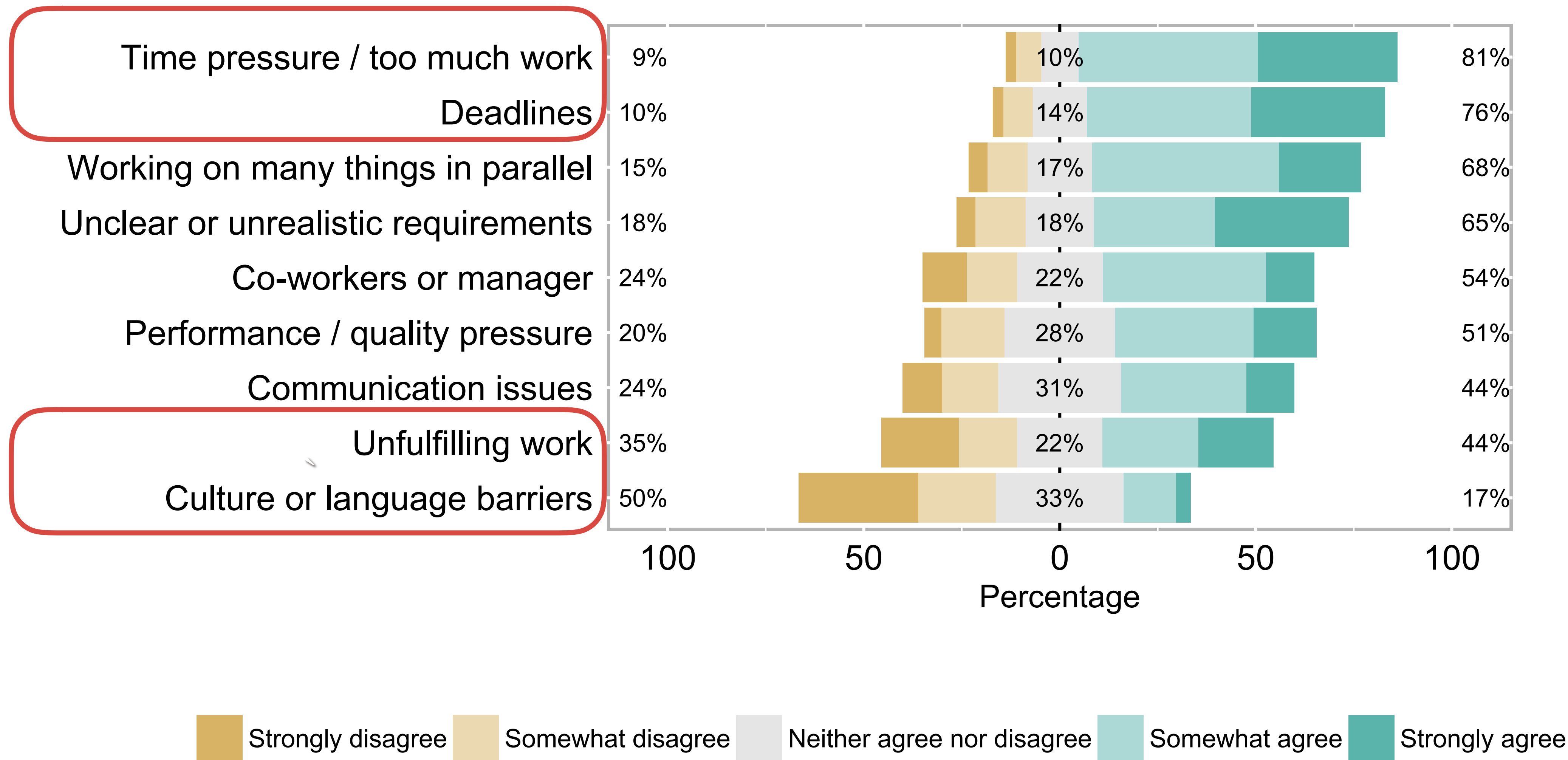
High work-rates common

? Prevalence of high work-rates



Causes of workplace stress

 Perceived Causes
and Impacts of Stress



Impacts of stress

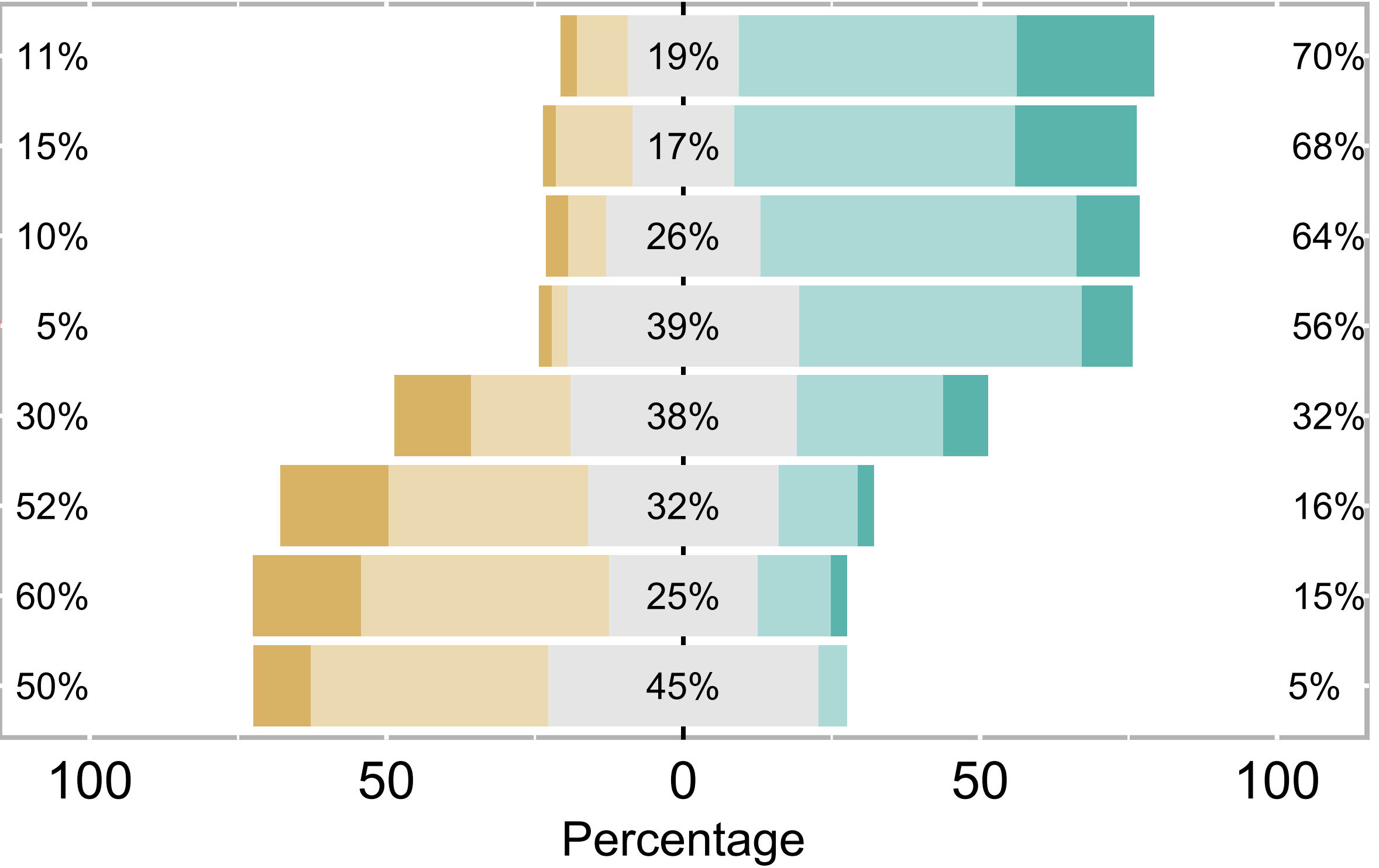
 Perceived Causes
and Impacts of Stress



I work outside of my normal business hours
the number of hours I work is
my communications are terse
my communications are negative



I stop working on the project
I am productive
I communicate
I produce high quality code



Senti4SD
(Cafelato et al., 2018)

 Much less  Somewhat less  About the same  Somewhat more  Much more

Empirical Study



Effects of increased workload
on developers' work patterns



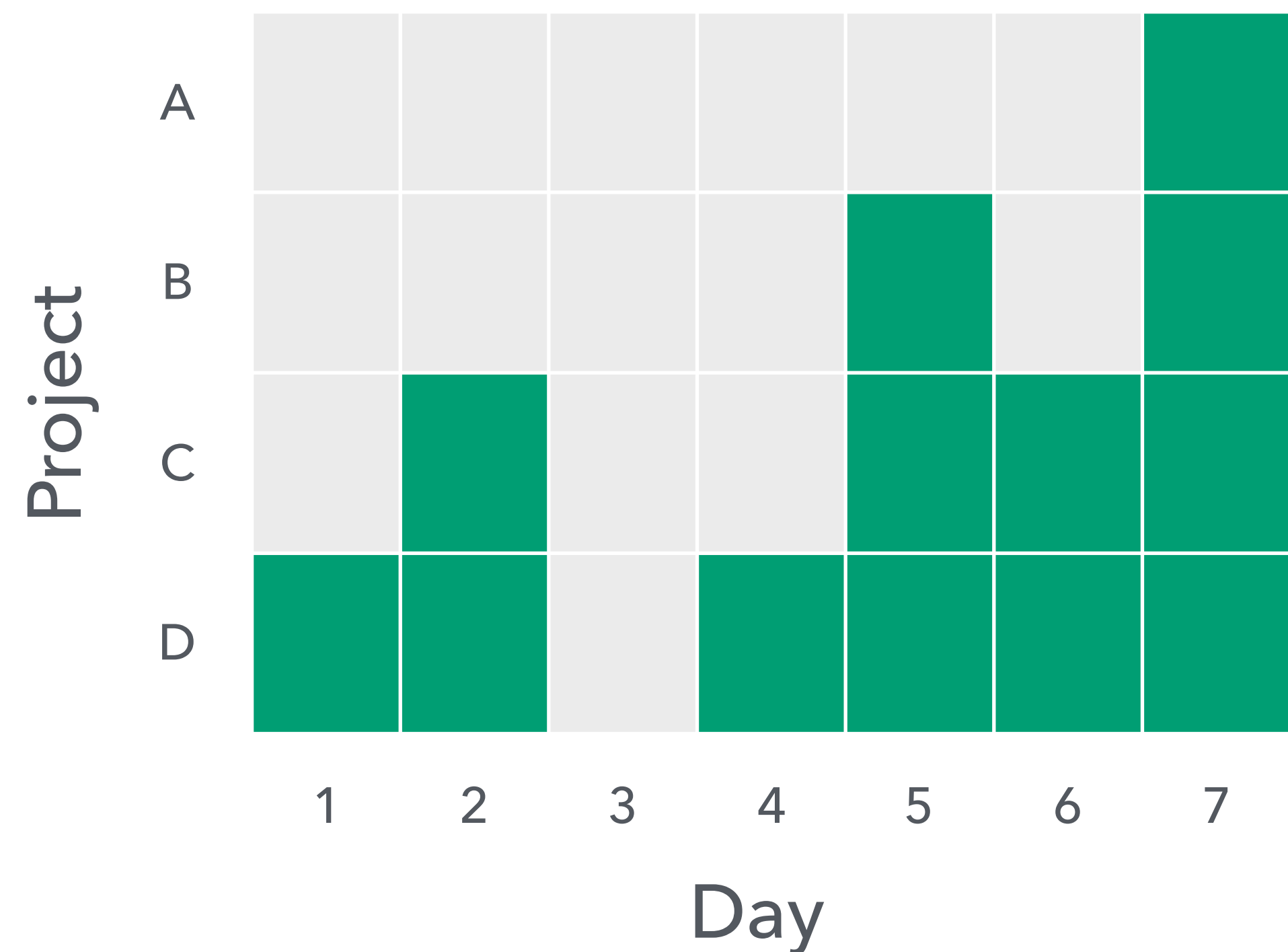
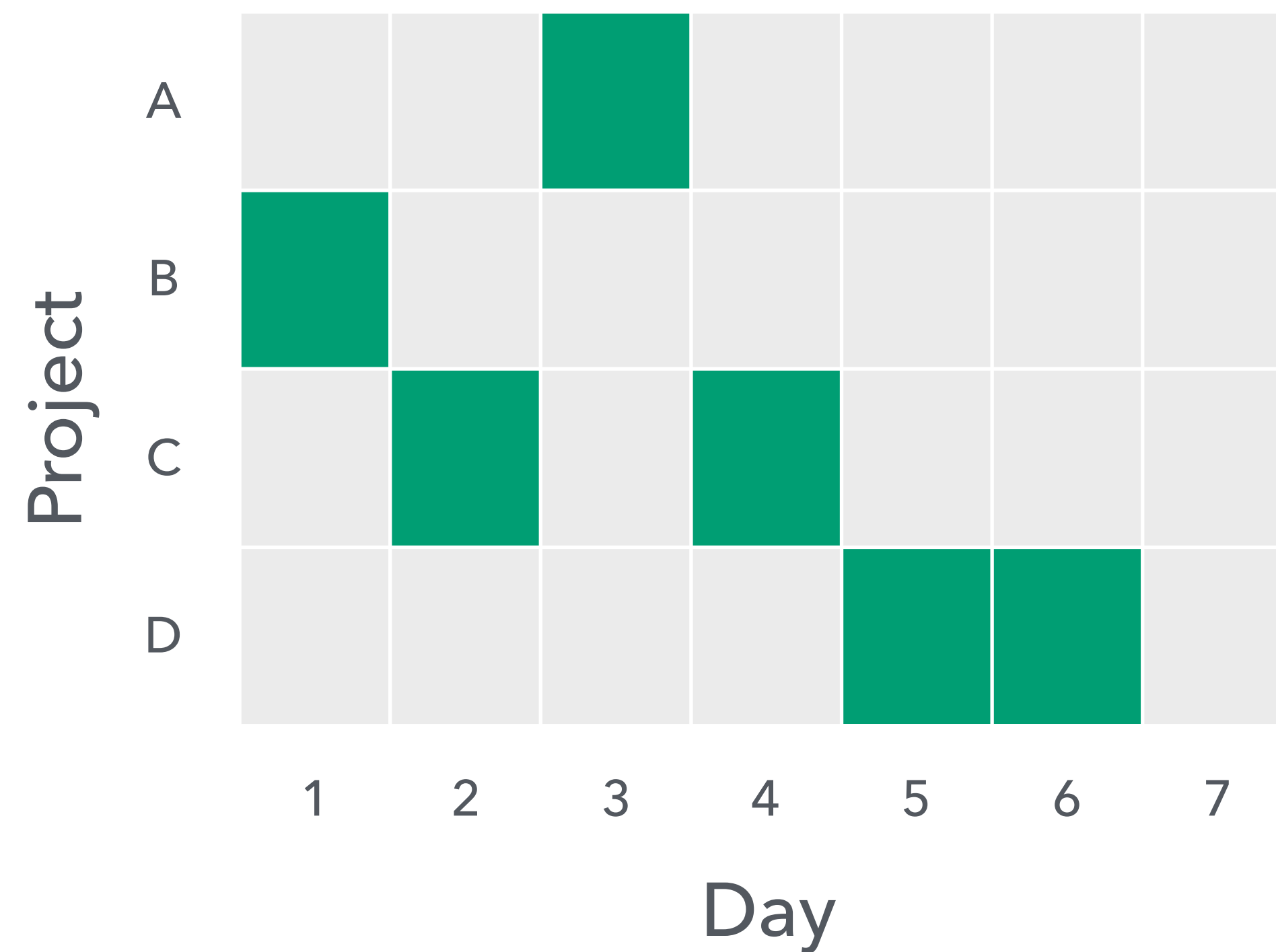
Multitasking dimensions

1. Projects per day

Working sequentially

vs.

Within-day multi-tasking

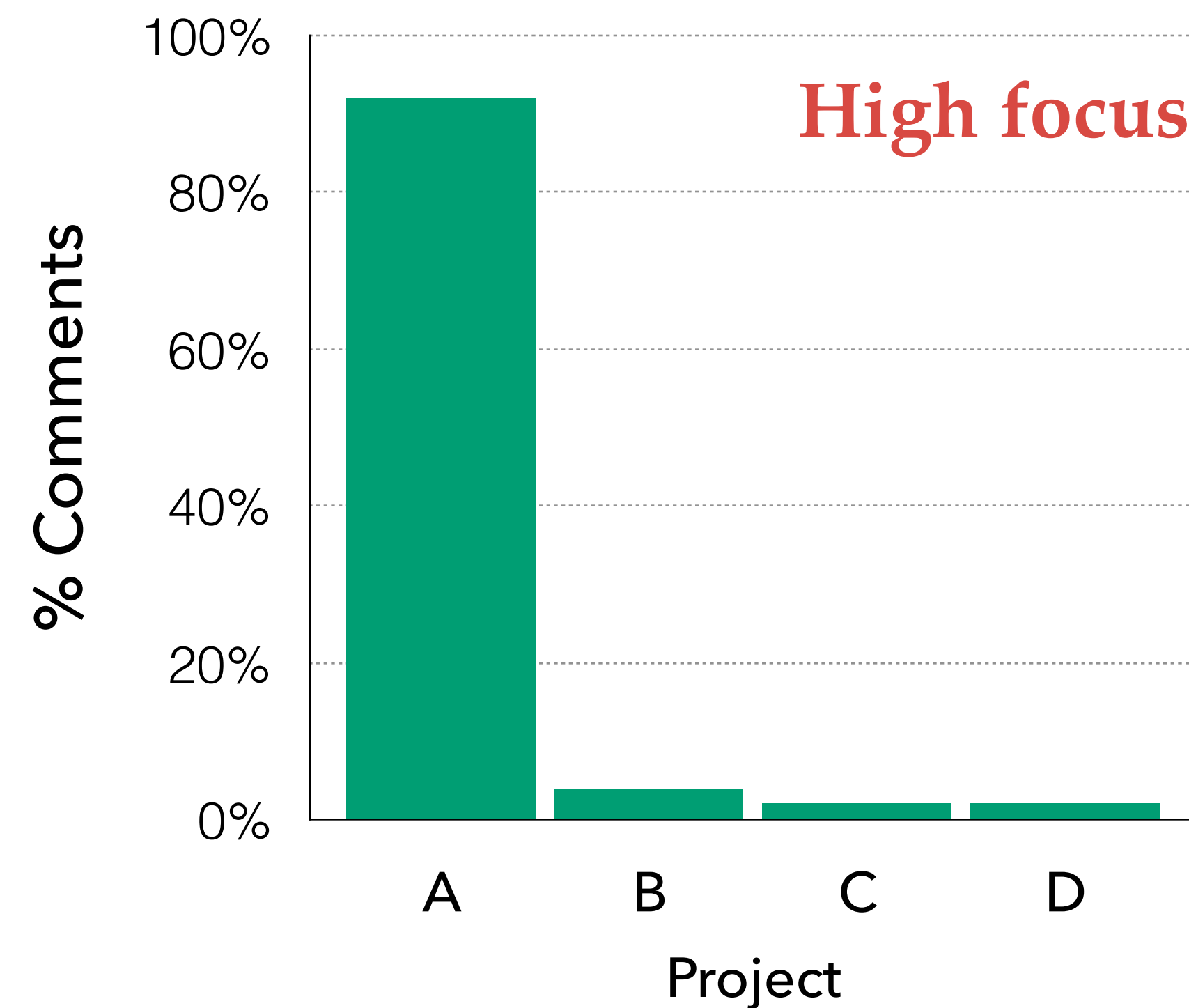


(Vasilescu et al., 2016)

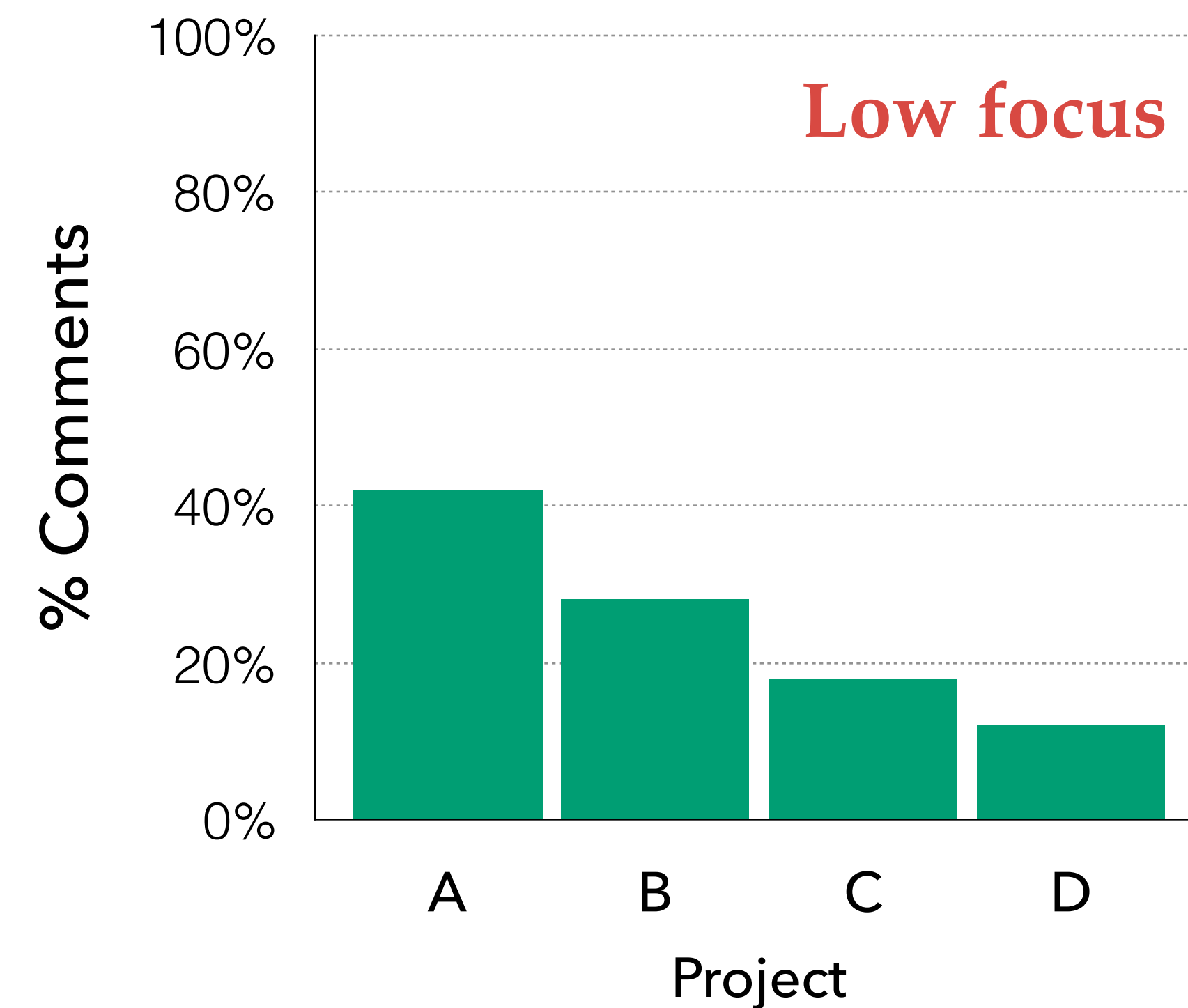
Multitasking dimensions

2. Weekly focus

Mostly on one project



vs. Evenly on all projects

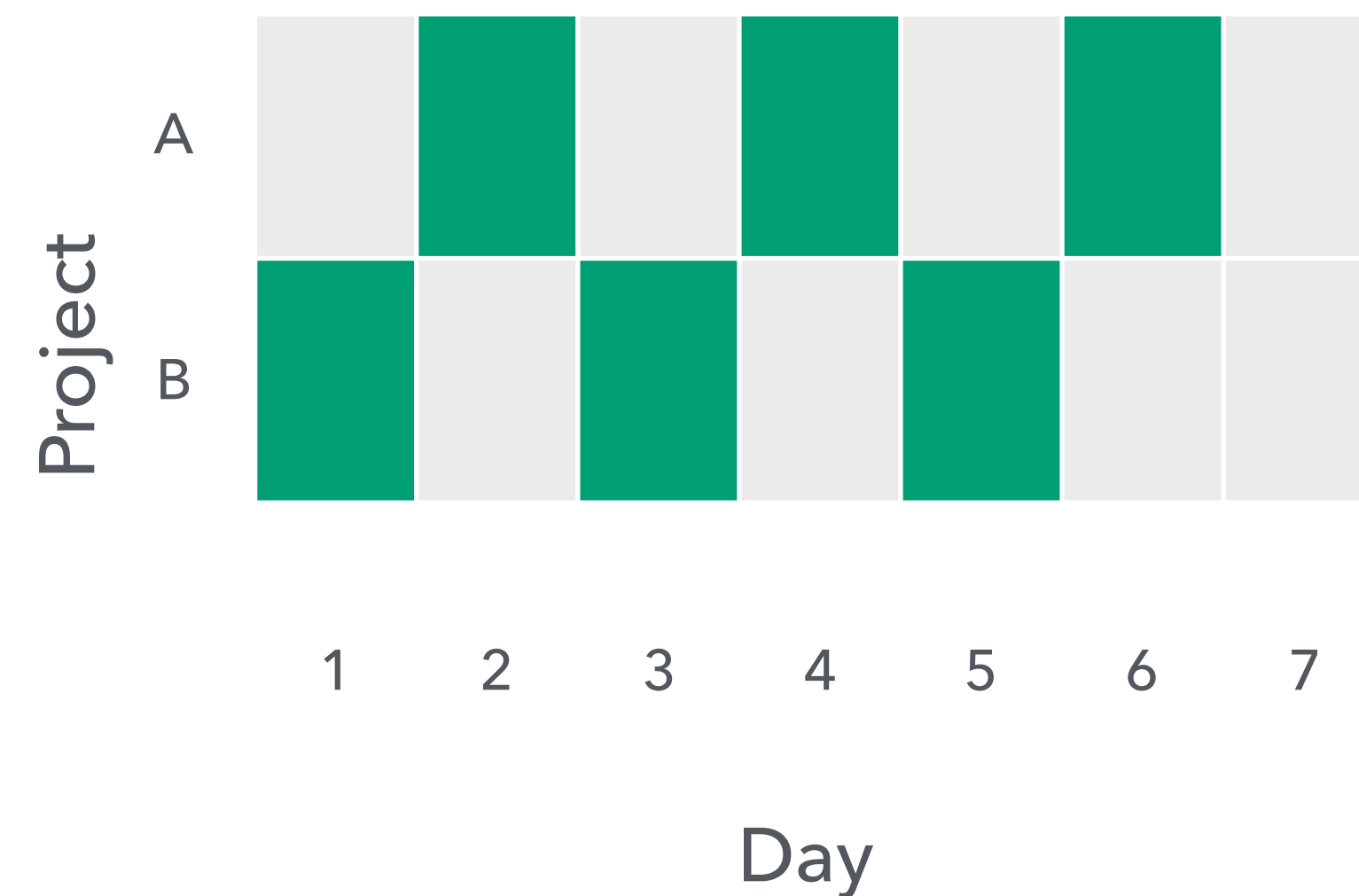
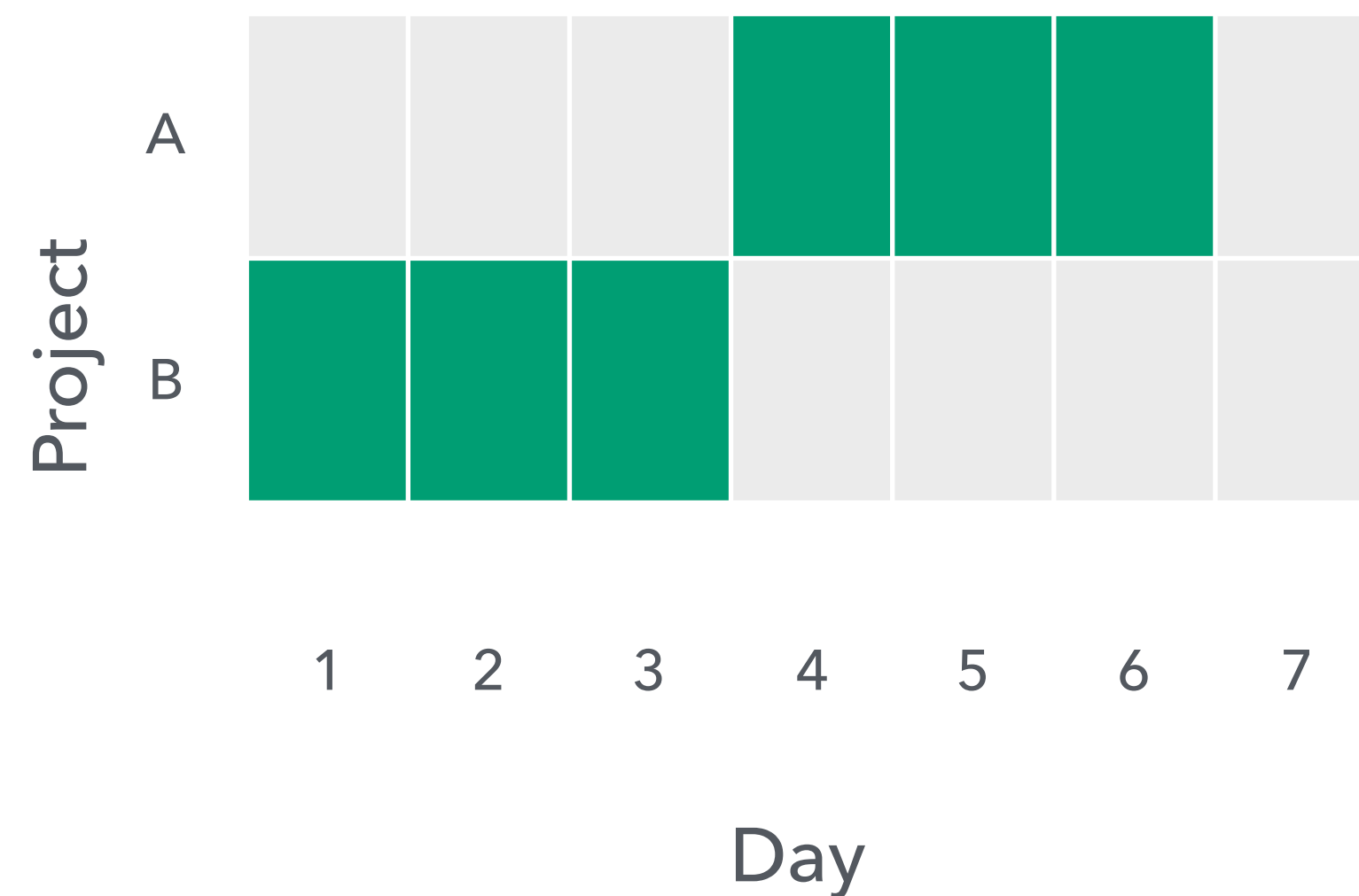


Multitasking Dimensions

3. Day-to-day focus

Repetitive day-to-day

vs. Changing focus each day



Statistical Analysis

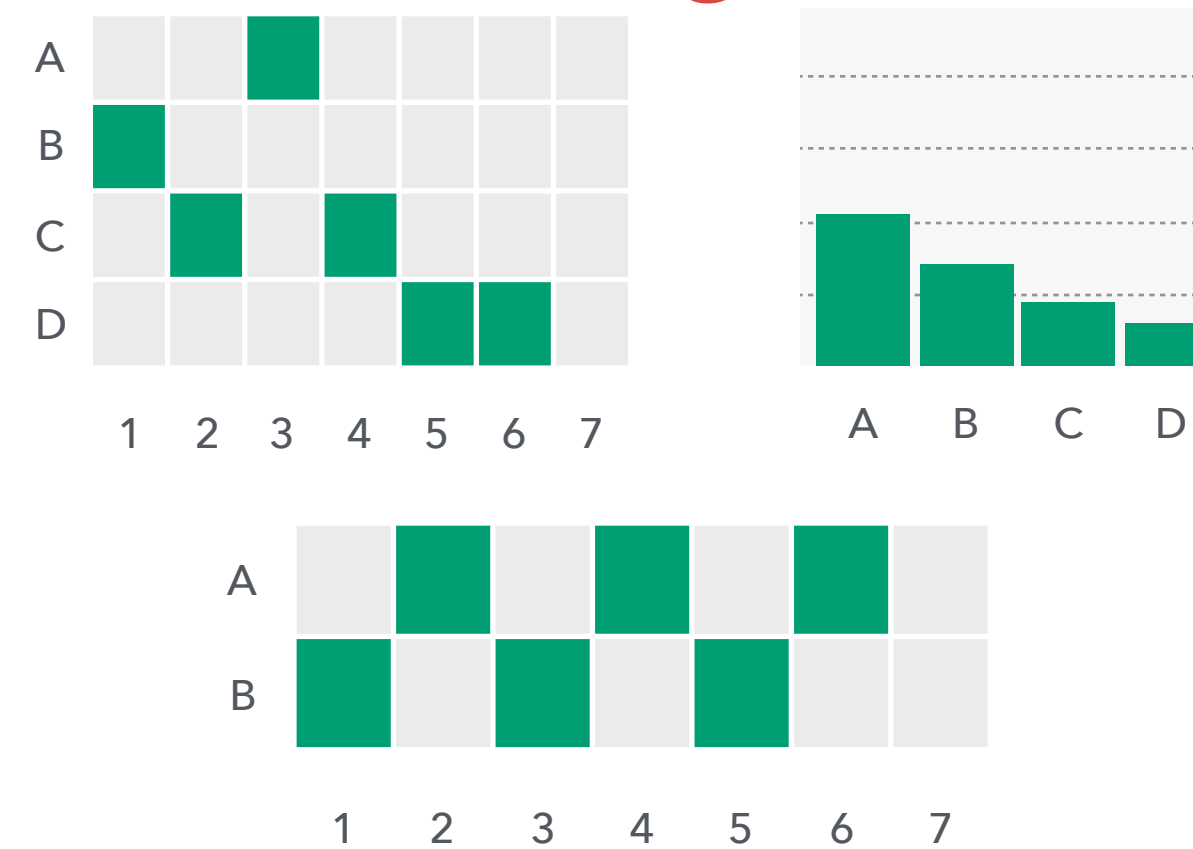
Responses

- Lines of code added
- Comments
- Sentiment

Controls

- Total projects
- Time since first commit
- Company affiliation
- ...

Multi-tasking Predictors



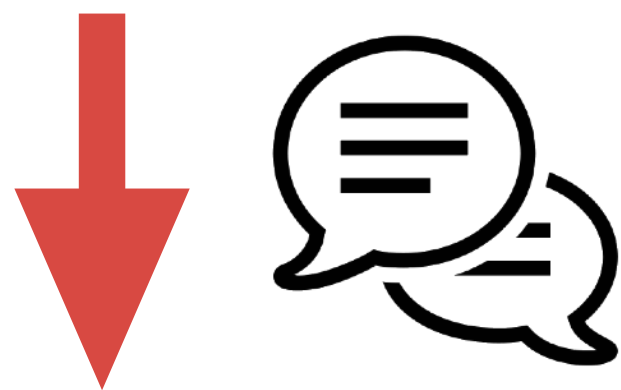
Sample:

- 57K+ developers
- 10+ years of activity
- 150K+ repositories

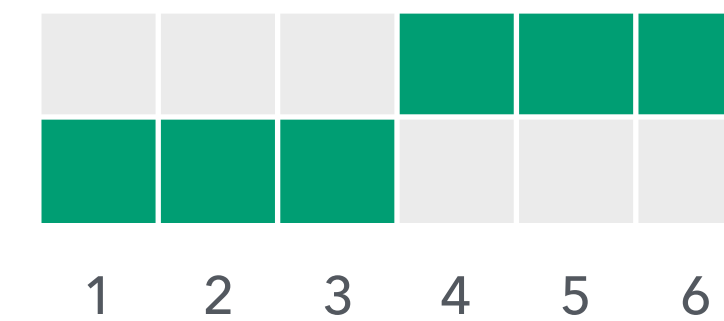
Effects: Weekly comments



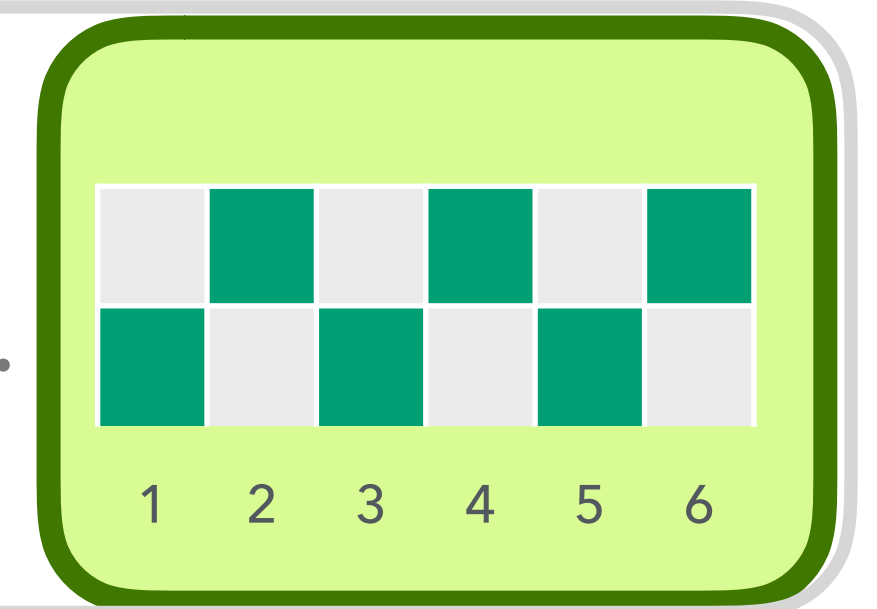
Company affiliation



Day-to-day
focus (less
predictable)



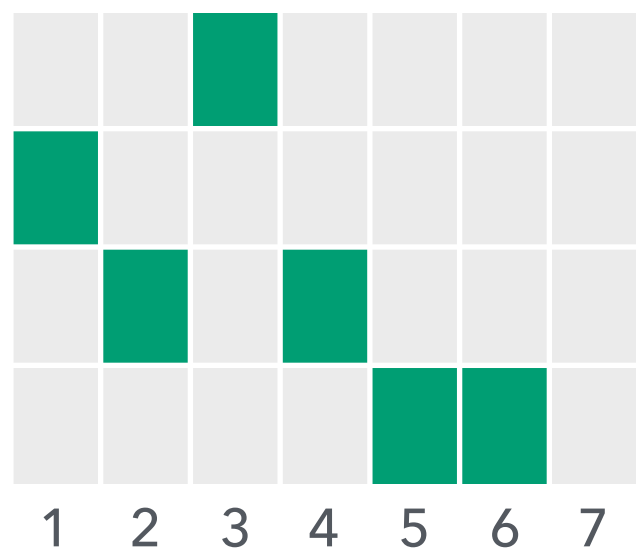
vs.



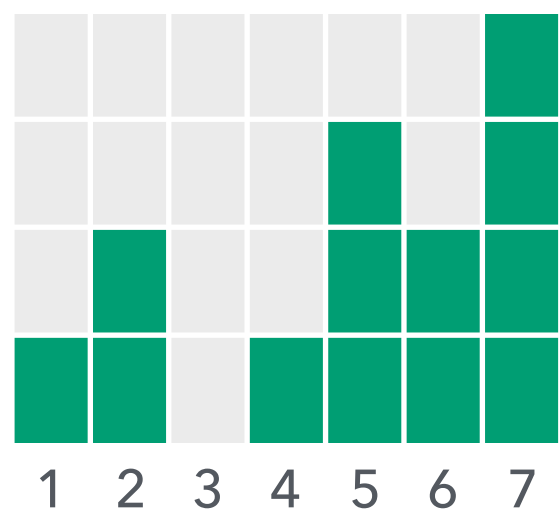
Effects: Lines of Code added

Higher LOC added

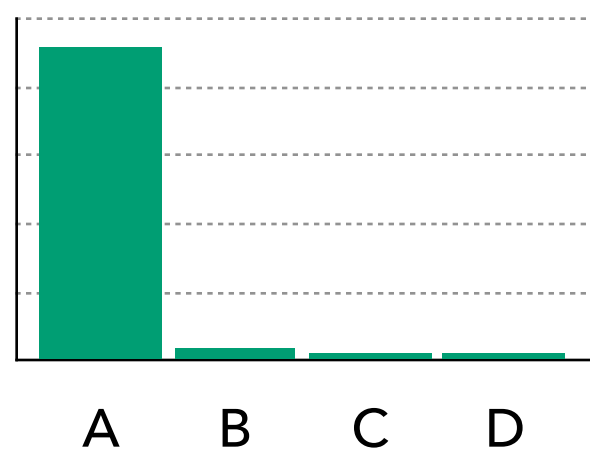
High levels
of comments
per day



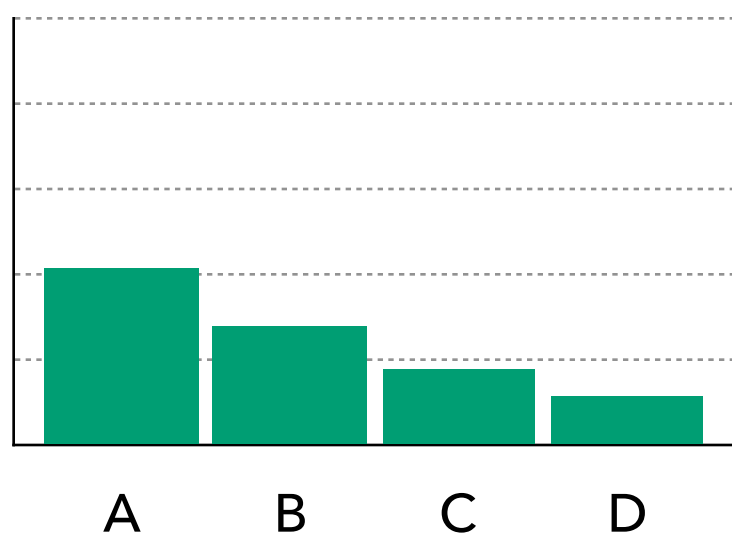
vs.



Focused
commenting



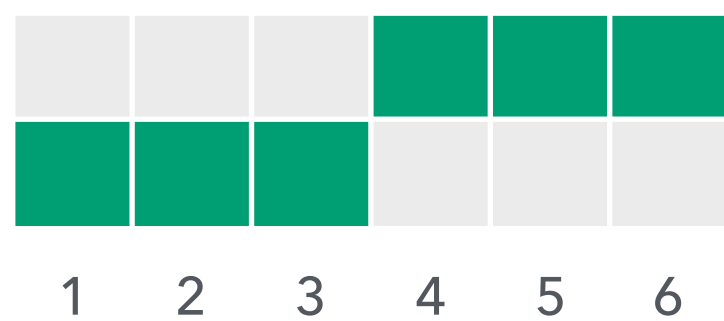
vs.



Day-to-day
focus
(repeatability)



vs.

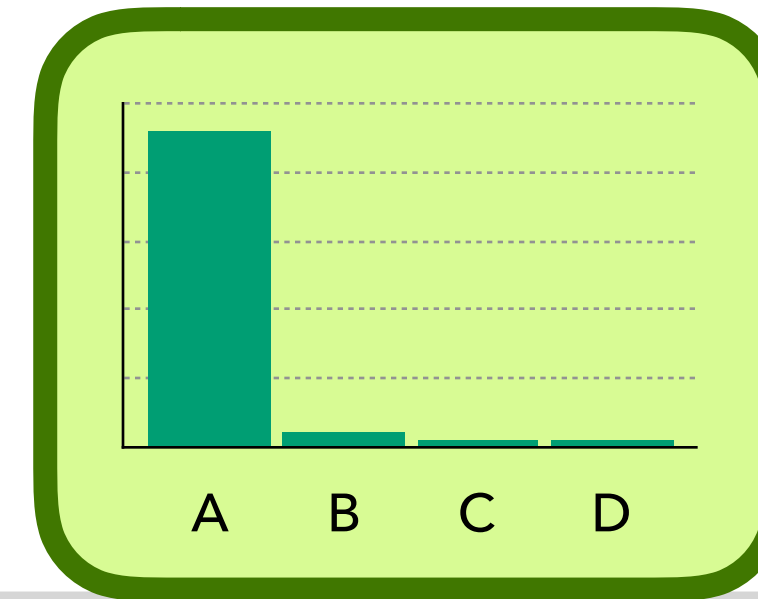


Effects: Negative sentiment

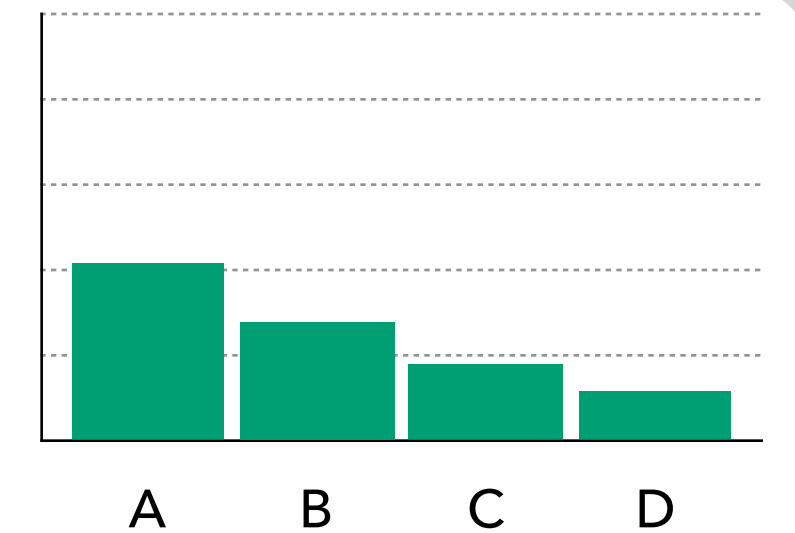


- ❖ Higher than normal levels of commenting
- ❖ Commenting on many more projects than usual
- ❖ Committing on many more days per week than usual

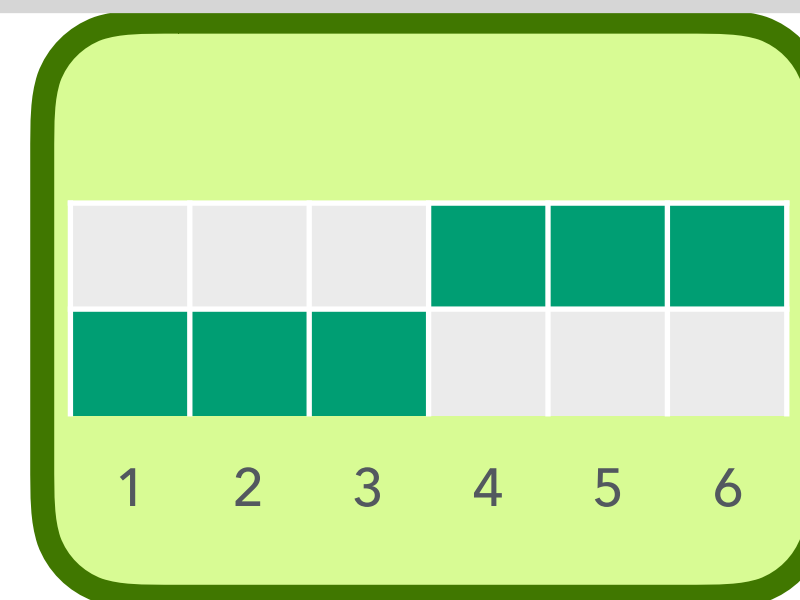
Focused commenting



vs.



Day-to-day focus (repeatability)



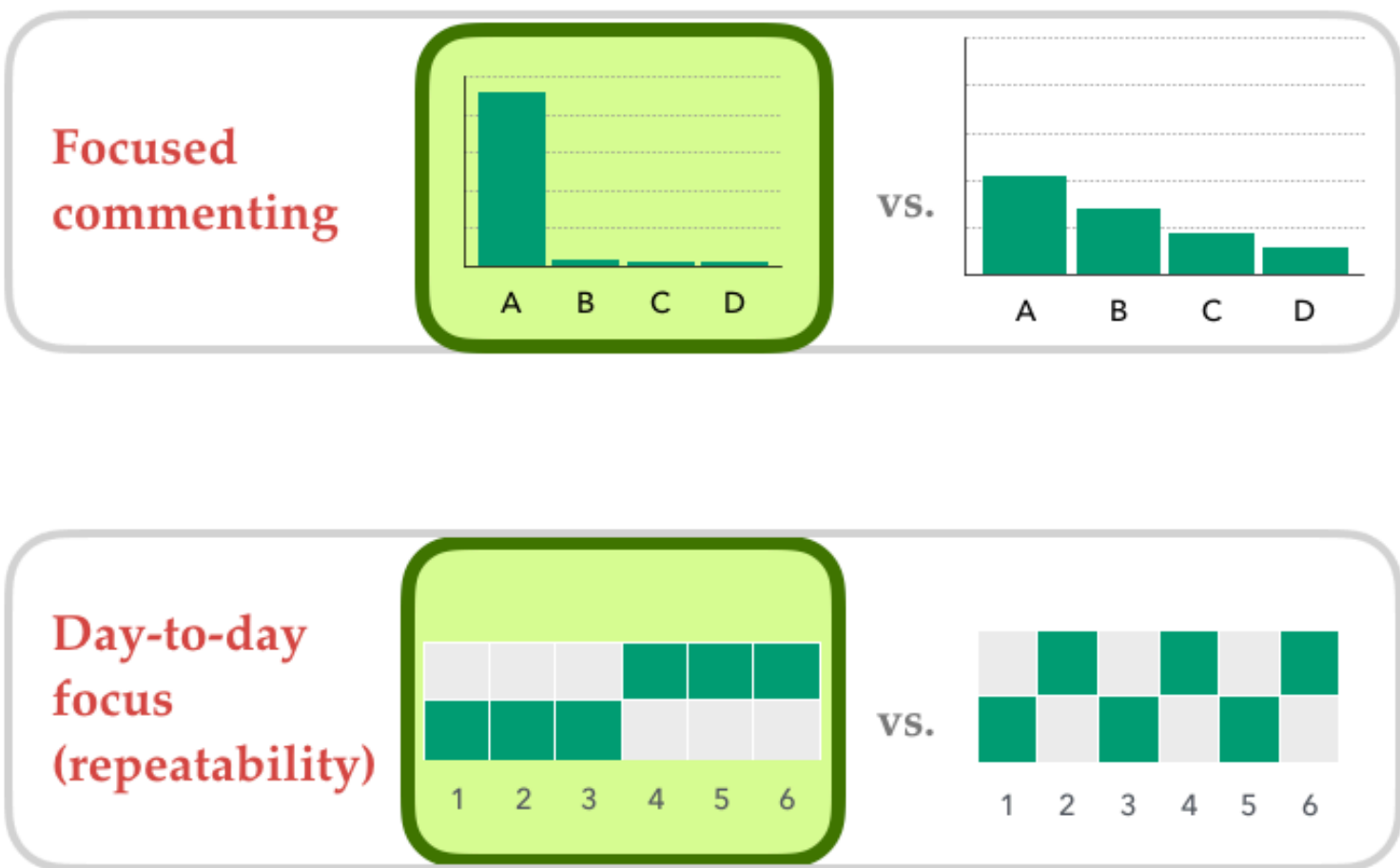
vs.



Effects: Negative sentiment



- ❖ High levels of commenting
- ❖ Commenting on many more projects than usual
- ❖ Committing on many more days per week than usual



Thanks!

Farhana Sarker
Bogdan Vasilescu
Kelly Blincoe
Vladimir Filkov